



Designed with you and your patients in mind

The OmniLab Advanced + multi-mode titration system

PHILIPS

RESPIRONICS



With the most modes of any titration device, a quiet platform, customizable reports, user-friendly features, and value-added benefits, you'll find the **OmniLab Advanced +** to be an ideal system for satisfying your lab titration needs.

Your ally in the lab

We back our commitment to help you achieve lab efficiency and successful titration studies by offering the OmniLab Advanced + titration system. Combined with our OmniLab Direct and OmniLab Connect, the OmniLab Advanced + offers enhanced features designed to help your staff perform titration studies, from beginning to end, easily and efficiently, on even your most complicated patients.

Nine therapy modes for enhanced flexibility

CPAP modes	
CPAP	For OSA patients
Auto CPAP	For OSA patients
Bi-level modes	
Auto Bi-level (with Bi-Flex)	For OSA and CPAP rescue patients
S (with AVAPS)	For OSA patients
S/T (with AVAPS)	For COPD, obesity hypoventilation, and neuromuscular disorder patients
autoSV (with Bi-Flex)	For Complex patients with central or mixed apneas and periodic breathing
T (with AVAPS)	For COPD and neuromuscular disorder patients
PC (with AVAPS)	For neuromuscular disorder patients (ALS)
AVAPS-AE mode	
AVAPS-AE (found in Trilogy series ventilators and select International devices)	For respiratory insufficiency patients (COPD, OHS and NMD)

Along with our Advanced therapy options—autoSV and AVAPS—clinicians and sleep technicians can now use AVAPS-AE to assist them with titrating their most complicated patients.

AVAPS-AE, supported by Trilogy ventilators, allows:

- **AVAPS** to maintain a targeted tidal volume
- **Auto EPAP** to maintain patent upper airway at a comfortable pressure
- **Auto backup rate** to target the patient's spontaneous respiratory rate
- **Adjustable AVAPS** to allow the clinician to control the speed at which pressure will change

Optimize your sleep lab workflow

From the market leaders in lab titration systems, we now bring you the OmniLab Advanced + system, with OmniLab Direct and OmniLab Connect. Together they provide you with a cohesive, harmonized solution to help you and your sleep technicians operate efficiently, easily and intuitively. The simplicity and ease of use of the titration system, including nine therapy modes, give you more options and flexibility to titrate more types of patients than ever before.

OmniLab Advanced + advantages

Nine therapy modes—the most available in the industry—to provide you with range and flexibility for all of your titration studies, including pediatric patients.*

Easy-to-navigate color screen—for use at bedside when setting up your patients to facilitate settings and patient comfort.

Minimal noise output—quiet operation.



Detailed titration settings report—time stamps patient settings and pressure changes directly into a summary report that you can edit and print for later follow up and physician review.

Prescription report—captures the patient's final therapeutic pressure settings into a customizable, printed prescription to help save additional processing time.

Heated Tube humidifier option—for enhanced humidification and reduction of rainout to facilitate patient comfort and compliance.

OmniLab Direct software—allows you to intuitively and remotely control the OmniLab Advanced + device from your control room for easy therapy changes and minimal patient disruptions.

OmniLab Connect—provides flexibility to use up to eight channels when interfacing between OmniLab Advanced + and a non-Philips Respiroics' PSG system. OmniLab Connect features an updated setup screen that allows you to create mode-specific montages on your PSG system and select from 24 signals, for specific modes, such as autoSV.

Mask leak detection—displays pertinent mask information, including total and unintentional leak. This information is displayed prior to the beginning of titration, and throughout the night, to help technicians quickly troubleshoot any possible mask issues.

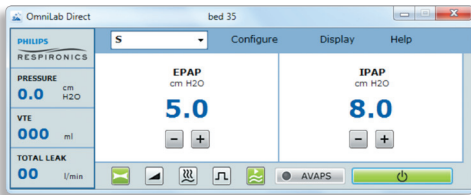
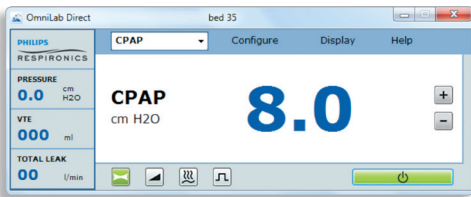
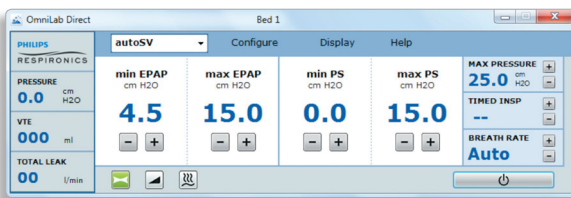
Access to My.Respiroics.com—for convenient access to software upgrades and enhancements.

Software upgrades and product notices available—through our SleepDx registration website.

* The effectiveness of the A-Flex and C-Flex+ therapy features, and the autoSV mode has not been established for pediatric patients at this time.



Settings and reports at your fingertips



OmniLab Direct allows patient settings and modes to be changed remotely from the control room

PHILIPS RESPIRIONICS Titration Settings Report

DEVICE DETAILS:
SERIAL NUMBER: L097782931B25

GENERAL INFORMATION:
REPORT GENERATED ON: 10/15/2013 9:06 PM
TITLE: BED 1

SESSION DATA:
FROM: 10/15/2013 9:02 PM To: 10/15/2013 9:06 PM

MODE	START	END	CPAP	Peak	TELE	PULS
MODE : CPAP AT 10/15/2013 9:02 PM			8.0 cm H2O	0.0	OFF	0.0 cm H2O
MODE : S AT 10/15/2013 9:03 PM			5.0 cm H2O	8.0	OFF	0.0
MODE : ST AT 10/15/2013 9:04 PM			5.0 cm H2O	8.0	OFF	0.0
MODE : AUTO SV AT 10/15/2013 9:05 PM			4.5 cm H2O	15.0	11	1.1
MODE : AUTO SV AT 10/15/2013 9:06 PM			4.5 cm H2O	15.0	11	1.1

FINAL THERAPY SETTINGS:

MODE: autoSV
MAX PRESSURE: 25.0 cm H2O
MIN EPAP: 4.5 cm H2O
MAX EPAP: 15.0 cm H2O
MIN PS: 0.0 cm H2O
MAX PS: 15.0 cm H2O
RATE: 11 BPM
COMFORT: BiFlex (2)

PHILIPS RESPIRIONICS Prescription for Therapy Device

Sleep Center / Provider Name: _____ Phone: _____
 Address: _____ City: _____ State: _____ Date: _____
 Fax: _____

Rx (CPAP/Bi-Level Therapy)

Patient Name: _____ Date: _____
 Address: _____ City: _____ State: _____ Phone: _____
 Ordering Physician: _____ License #: _____
 Address: _____ City: _____ State: _____
 Phone: _____ Fax: _____
 Diagnosis: _____ PSG Date: _____ AHI: _____

THERAPY SETTINGS:

Mode: autoSV
 Max Pressure: 25.0 cm H2O
 Min EPAP: 4.5 cm H2O
 Max EPAP: 15.0 cm H2O
 Min PS: 0.0 cm H2O
 Max PS: 15.0 cm H2O
 Rate: 11 BPM
 Timed Insp.: 1.1 seconds
 Comfort: BiFlex (2)

RAD QUALIFICATIONS: (for BiPAP autoSV mode only)

Has patient failed CPAP therapy?	<input type="checkbox"/> Yes	<input type="checkbox"/> No
Is AHI > 5?	<input type="checkbox"/> Yes	<input type="checkbox"/> No
Is % of central apneas > 50% of Total?	<input type="checkbox"/> Yes	<input type="checkbox"/> No
Are central apneas / hypopneas > 5/hour?	<input type="checkbox"/> Yes	<input type="checkbox"/> No
Diagnosis of CSA or CompSA?	<input type="checkbox"/> Yes	<input type="checkbox"/> No

HCPCS Codes:
 E0471 (Bi-level with backup rate) autoSV

ICD-9 Codes for BiPAP autoSV:

<input type="checkbox"/> 327.21	Primary central sleep apnea
<input type="checkbox"/> 327.22	Central sleep apnea due to high altitude periodic breathing
<input type="checkbox"/> 327.23	Central sleep apnea in conditions specified elsewhere
<input type="checkbox"/> 327.24	Other organic sleep apnea
<input type="checkbox"/> 786.04	Central sleep apnea due to Cheyne-Stokes Breathing Pattern

ADDITIONAL REQUIREMENTS:
 Humidification: _____ Download Compliance Reporting: _____

PATIENT INTERFACE:
 Masks or interface: _____ Size: _____

STATEMENT OF MEDICAL NECESSITY:
 The above patient has undergone polysomnographic evaluation. This evaluation has confirmed the diagnosis of Sleep Apnea/Hypopnea. Nasal CPAP/Bi-level PAP is medically necessary and provides the most effective treatment.

Ordering Physician Signature: _____ Date: _____

DISPENSE AS WRITTEN – NO SUBSTITUTIONS

© Koninklijke Philips N.V., 2013. All rights reserved.

A customizable Titration Settings Report provides detailed information on your patient's titration

Prescription tool that captures final therapeutic settings into an automatically generated and customizable prescription

Specifications and ordering information

Product specifications	
Dimensions	8.75" (l) x 7.25" (w) x 4.25" (h) 22.23 cm (l) x 18.42 cm (w) x 10.0 cm (h)
Weight	Approximately 4.4 lbs (2 kg)
Filters	Reusable pollen and optional ultra-fine
Altitude compensation	Automatic compensation
Electrical requirements	100-240 VAC, 50/60 Hz, 1.2 A
Warranty	Two years
Miscellaneous	Integrated heated humidification, Heated Tube humidification, lighted color screen, automatic on/off, mask off alert
Pressure ranges	
CPAP	4 – 20 cm H ₂ O
Auto CPAP	4 – 20 cm H ₂ O
S	EPAP 4 – 25 cm H ₂ O, IPAP 4 – 30 cm H ₂ O (except with Bi-Flex turned on, then 4-25)
Auto Bi-level	EPAP 4 – 25 cm H ₂ O, IPAP 4 – 25 cm H ₂ O
S/T, T, PC	EPAP 4 – 25 cm H ₂ O, IPAP 4 – 30 cm H ₂ O
autoSV	EPAP 4 – 30 cm H ₂ O, Pressure Support 0 – 26 cm H ₂ O
AVAPS-AE	4 – 30 cm H ₂ O, Pressure Support 2 – 26 cm H ₂ O
Ordering information	
Item	Part number
OmniLab Advanced + with Heated Tube humidifier	1111124
A Series System One humidifier	1111551
Water chamber (includes both 50 and 60 Series lids)	1063785
System One Heated Tube	SYS1HT15
OmniLab Connect	1111076
OmniLab Direct	Log in to My.Respironics.com or use PN 1112033 to receive a CD



We cover your lab diagnostic equipment and titration needs



Philips Respironics is working in harmony with the care team to produce solutions that can lead to healthier patients, healthier practices and healthier businesses.

**Philips Healthcare is part of
Royal Philips**

How to reach us

www.philips.com/healthcare
healthcare@philips.com

Asia

+49 7031 463 2254

Europe, Middle East, Africa

+49 7031 463 2254

Latin America

+55 11 2125 0744

North America

+1 425 487 7000

800 285 5585 (toll free, US only)

Philips Respironics
1010 Murry Ridge Lane
Murrysville, PA 15668

Customer Service
+1 724 387 4000
800 345 6443 (toll free, US only)

Philips Respironics Asia Pacific
+65 6882 5282

Philips Respironics Australia
+61 (2) 9947 0440
1300 766 488 (toll free Australia only)

Philips Respironics China
+86 400 828 6665
+86 800 828 6665

Philips Respironics Deutschland
+49 8152 93 06 0

Philips Respironics France
+33 2 51 89 36 00

Philips Respironics Italy
+39 039 203 1

Philips Respironics Sweden
+46 8 120 45 900

Philips Respironics Switzerland
+41 6 27 45 17 50

Philips Respironics United Kingdom
+44 800 1300 845

www.philips.com/respironics

autoSV, AVAPS, Bi-Flex, BiPAP, OmniLab, PC Direct and Respironics are trademarks of Koninklijke Philips N.V. and its affiliates.
The C-Flex mark is used under license. All rights reserved.

Please visit www.philips.com/omnilab



© 2013 Koninklijke Philips N.V.
All rights are reserved.

Philips Healthcare reserves the right to make changes in specifications and/or to discontinue any product at any time without notice or obligation and will not be liable for any consequences resulting from the use of this publication.

CAUTION: US federal law restricts these devices to sale by or on the order of a physician.
Geyer SB 10/08/13 MCI 4105826 PN 1112817